



ZEISS Lens Data Revision Tool

for CP.3 XD 18/T2.9

Manual

Table of Contents

Introduction	1
Explanation of Symbols	1
 When to Use the Lens Data Revision Tool	 1
 How to Use the Lens Data Revision Tool	 1
Needed Equipment	1
Requirements	1
Preparing the Lens & the Connection Kit	2
Installing the Software	3
Using the Software	3
 Troubleshooting	 6
 Appendix	 6

Introduction

In this manual you learn how to use the Lens Data Revision Tool for CP.3 XD 18/T2.9.

Explanation of Symbols

INFO

The information symbol indicates additional information, which is useful for the context.

RESULT

The result symbol indicates information about the obtained result of a step.

When to Use the Lens Data Revision Tool

If your CP.3 XD lens only sends static shading data while opening and closing the aperture, the use of the Lens Data Revision tool is recommended.

The Lens Data Revision Tool can be found here:

<https://www.zeiss.com/content/dam/camera-lenses/files/service/download-center/software/cp3-lens-data-revision-tool/zeiss-cp3-lens-data-revision-tool.zip>

How to Use the Lens Data Revision Tool

Needed Equipment

- Computer
 - Installed OS: Windows
 - At least 1 free USB port
- Connection Kit eXtended Data (available at ZEISS)
 - Digitus® USB – RS232 converter cable
 - Charger cable
 - International power plug adapter
- CP.3 XD 18/T2.9 lens

Requirements

- The drivers for the Digitus® USB – RS232 converter are installed.

Preparing the Lens & the Connection Kit

1. Connect the male RS232 plug with the female RS232 plug.
2. Attach the appropriate power plug adapter to the power plug.
3. Plug the power plug into a power socket.
4. Connect the lemo plug to the lens.
5. Start your computer.
6. Connect the USB plug into a USB port on your computer.

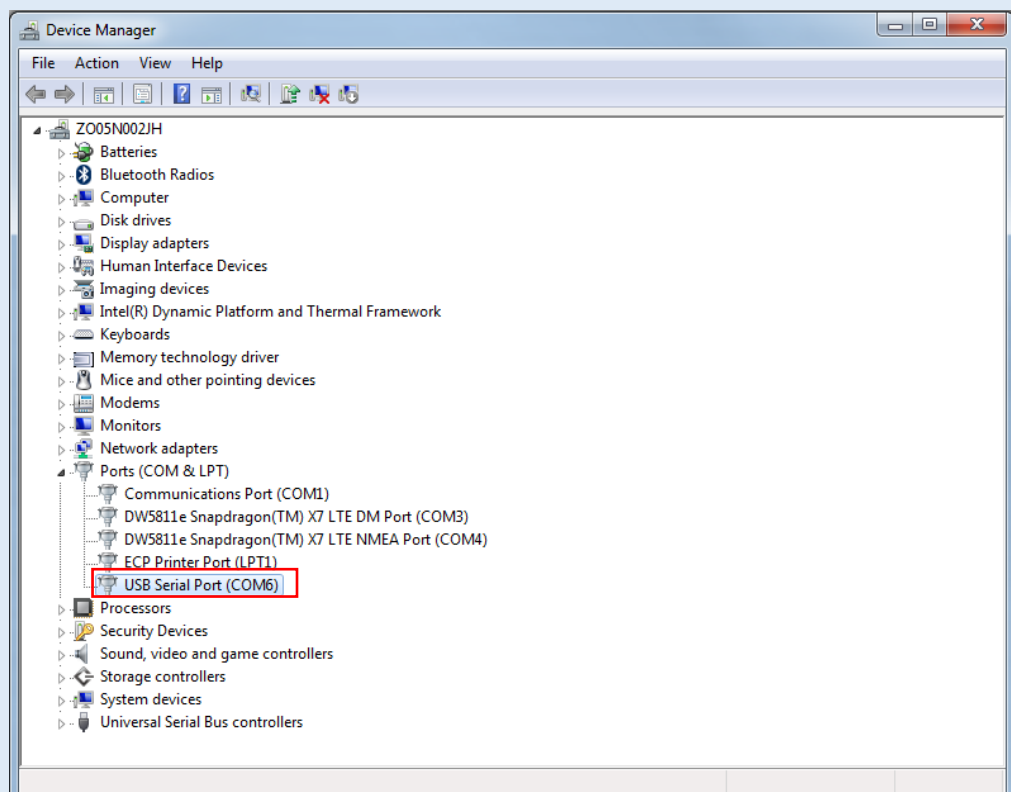
INFO

A window should pop up reading that drivers have been installed and your device is ready to use.

7. Identify the COM port (COM#) of your Connection Kit.

INFO

You'll find the COM port in the **Device Manager** under **Ports (COM & LPT)>USB Serial Port**. To get to the Device Manager, press the **WINDOWS** key and type in "Device Manager".



In this example the identified COM port would be **COM6**.

Installing the Software

1. Download the Lens Data Revision Tool.

INFO

You can find the download here:

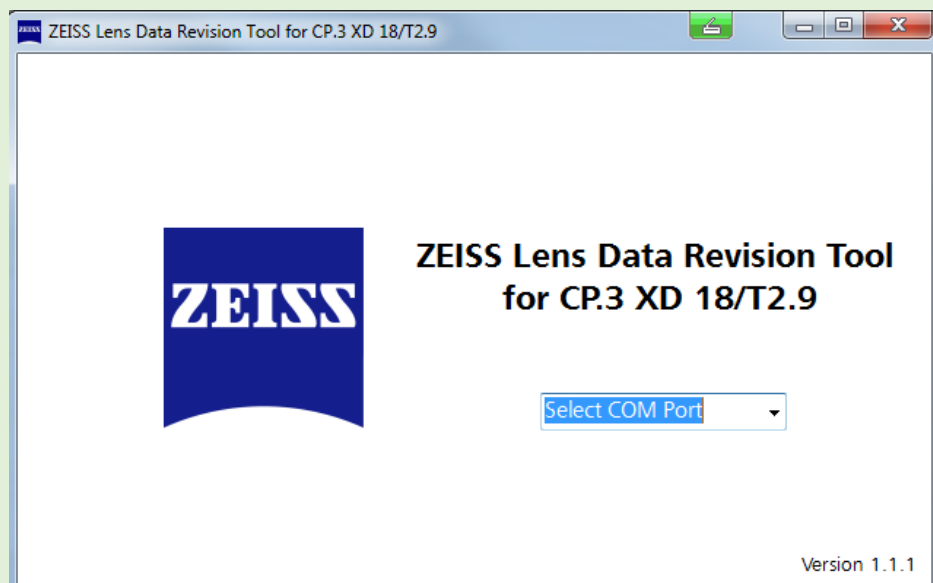
<https://www.zeiss.com/content/dam/camera-lenses/files/service/download-center/software/cp3-lens-data-revision-tool/zeiss-cp3-lens-data-revision-tool.zip>

2. Open the setup by double clicking the .exe file.
3. Follow the installation wizard.

Using the Software

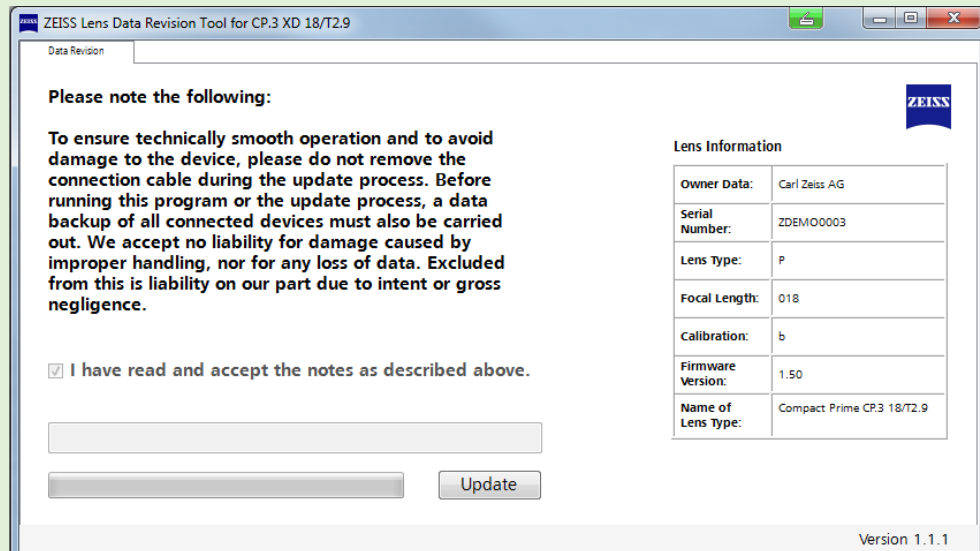
1. Launch the Data Revision Tool CP.3 XD 18/T2.9.

RESULT The following window opens.

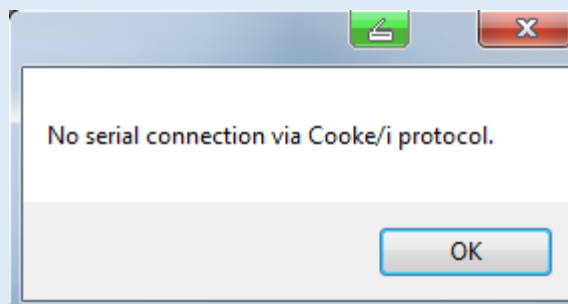


2. In the dropdown menu choose the identified COM port.

RESULT The following window opens.

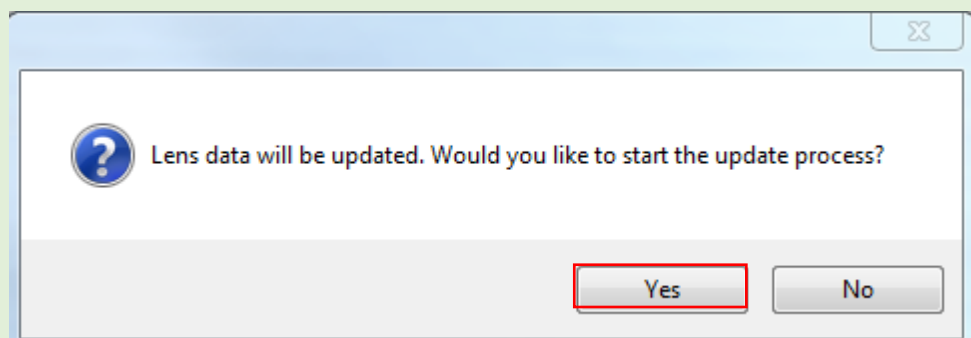


INFO If you chose the wrong COM port, the following window opens.



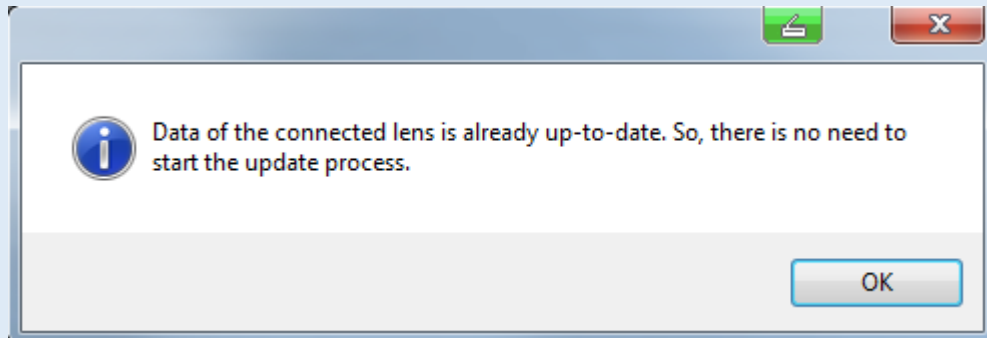
3. Accept the notes by clicking on the checkbox.
4. Click on **Update**.

RESULT The following window opens.



INFO

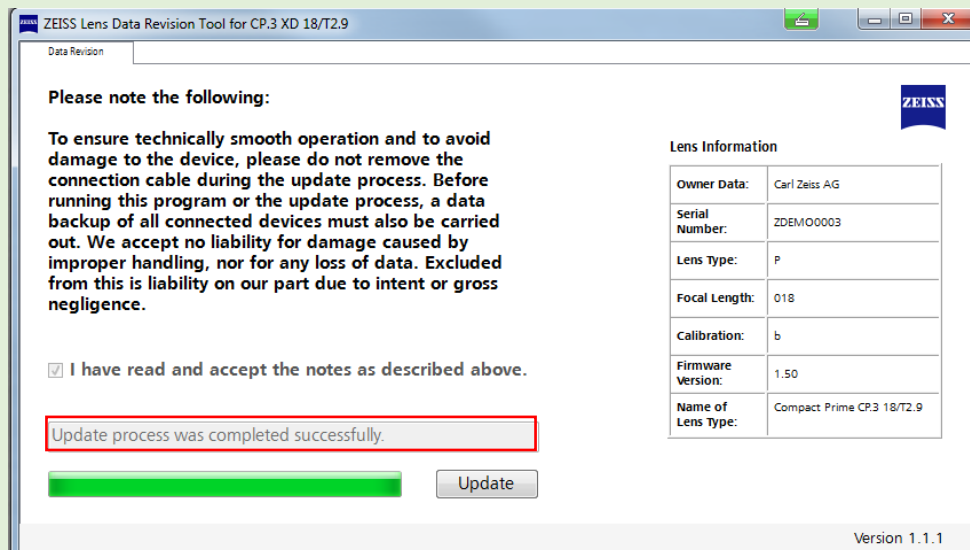
If your lens is already up-to-date, the following window will open instead. No further action is needed.



5. Confirm the process by clicking **Yes**.

RESULT

After the update is finished, the following message is shown.



6. You now successfully updated the affected data of your lens.

Troubleshooting

I can't find USB Serial Port under the Ports (COM & LPT) tab in the Device Manager.	Reason: Drivers are not installed properly.
	Install the drivers from the enclosed CD.
	<div> INFO <p>If you can't find the CD, you can download the drivers from the manufacturers website.</p> </div> <div> RESULT <p>The USB Serial Port is now listed under Ports (COM & LPT) in the Device Manager.</p> </div>

Appendix

Accessories	ZEISS Identification Number
Connection Kit eXtended Data	2217-107

Carl Zeiss AG

Camera Lenses

73446 Oberkochen

Germany

www.zeiss.com/cine