

KS ELISPOT

The Standard for Automatic Evaluation

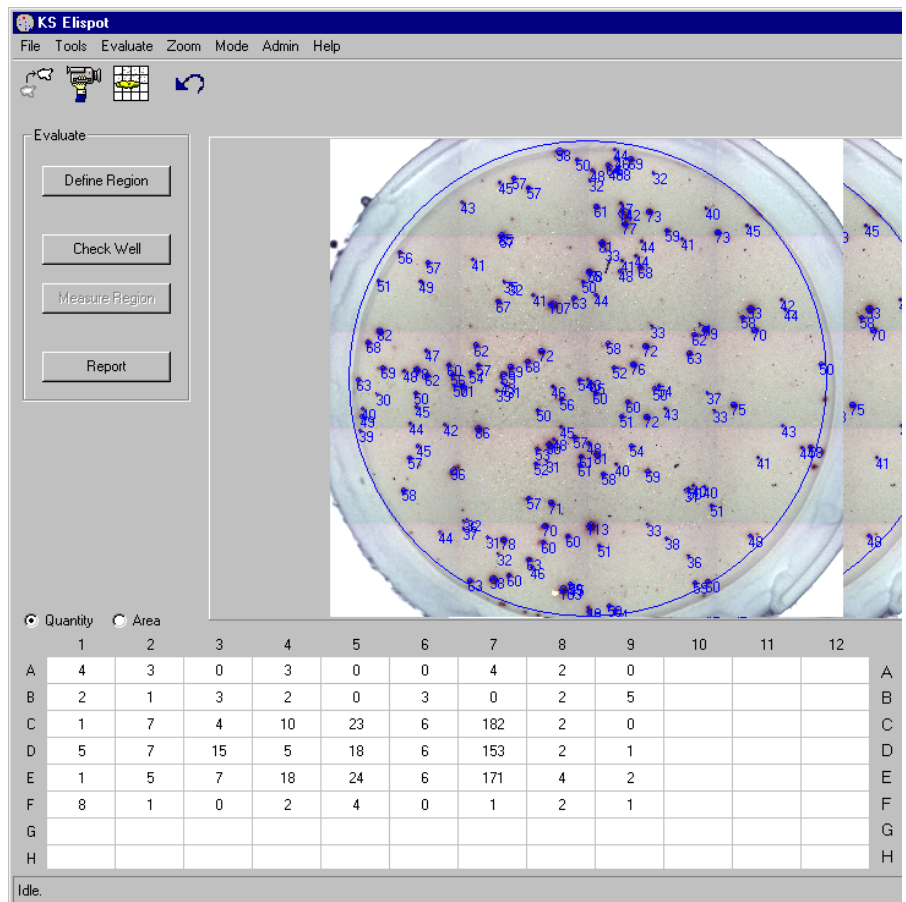
Elispot (Enzyme Linked Immuno Spot) evaluation is a sensitive method for detecting and quantifying individual T-lymphocytes, which form cytokine spots after antigen contact in vitro.

With the help of the system the quantity, size and intensities of the spots can be determined automatically.

KS ELISPOT has been developed as a complete system solution for the precise and automatic evaluation of Elispot assays, especially for use in routine laboratories. All components, from the camera to the motor stage and right through to the microscope, are harmonized in an optimal manner.

The immunochemically stained cytokine spots are acquired in an incident light acquired using an automated stage and an autofocus facility via a 3 chip CCD color camera.

The images are digitized using 24-bit color resolution and evaluated by KS ELISPOT. The well selection is determined on screen using the mouse.



You only need to define the start and end point in order to begin the measurement.

*KS ELISPOT operator interface:
Example of Interferon Gamma
Elispot
(overall image of well E7
consisting of 20 individual
images)*

**Efficient and reproducible method
for analyzing Elispot assays**



Complete package for fast evaluation times

Simple operation

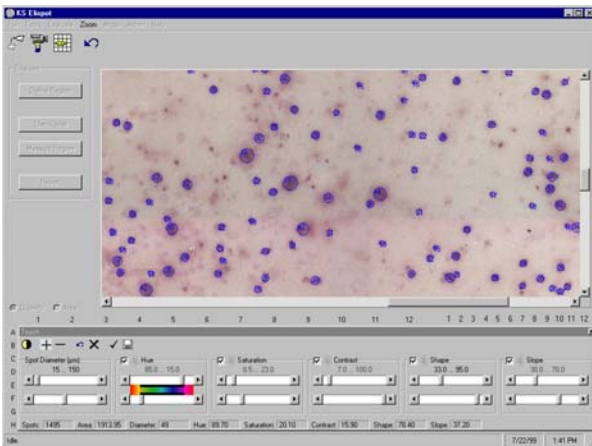
The user-friendly operator interface guarantees minimum training time and simple setting of the small number of measurement parameters required. Results are available quickly and reliably, which saves time and laboratory costs.



KS ELISPOT workstation with motor stage and autofocus facility

Learning procedure for spot identification

With the universal spot learning procedure the system parameters for spot identification are adjusted simply by clicking with the cursor. This considerably increases the consistency of the measurements.

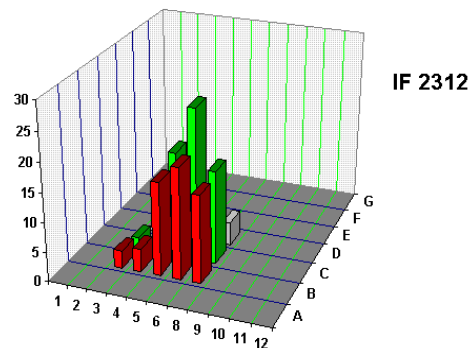


Spot parameter learning in the unique Teach mode (TNF α Elispot, detailed view with full resolution)

Consistency even for smaller spots

Reliable identification, even of smaller spots, is made possible by the high resolution of the Axioplan 2 light microscope. This means that the system is already equipped for future requirements (TNF α , Interleukin 4,5, etc.).

The results of the analysis are immediately displayed on screen. The quantity, size and intensity of each individual spot can be printed out or exported into a file for further statistical evaluation or graphical representation. Images of individual wells can be saved for documentation.



Results display after exporting data into an Excel data sheet

KS Elispot operates under Windows 95/98 or Windows NT and can easily be incorporated into network environments.

System requirements

- Axioplan 2 microscope, Epiplan-Neofluar 5x
- Motor stage
- Autofocus facility
- MCP4 motor-control
- TV zoom adapter 44 ENG 1/2"
- 3 chip CCD color camera
- PC system with Windows 95/98 or NT, 17" monitor
- KS ELISPOT software

Carl Zeiss

Light Microscopy

P.O.B. 4041

37030 Göttingen

Phone: ++49 551 5060 660

Telefax: ++49 551 5060 464

E-mail: micro@zeiss.de

Internet: www.zeiss.de/elispot