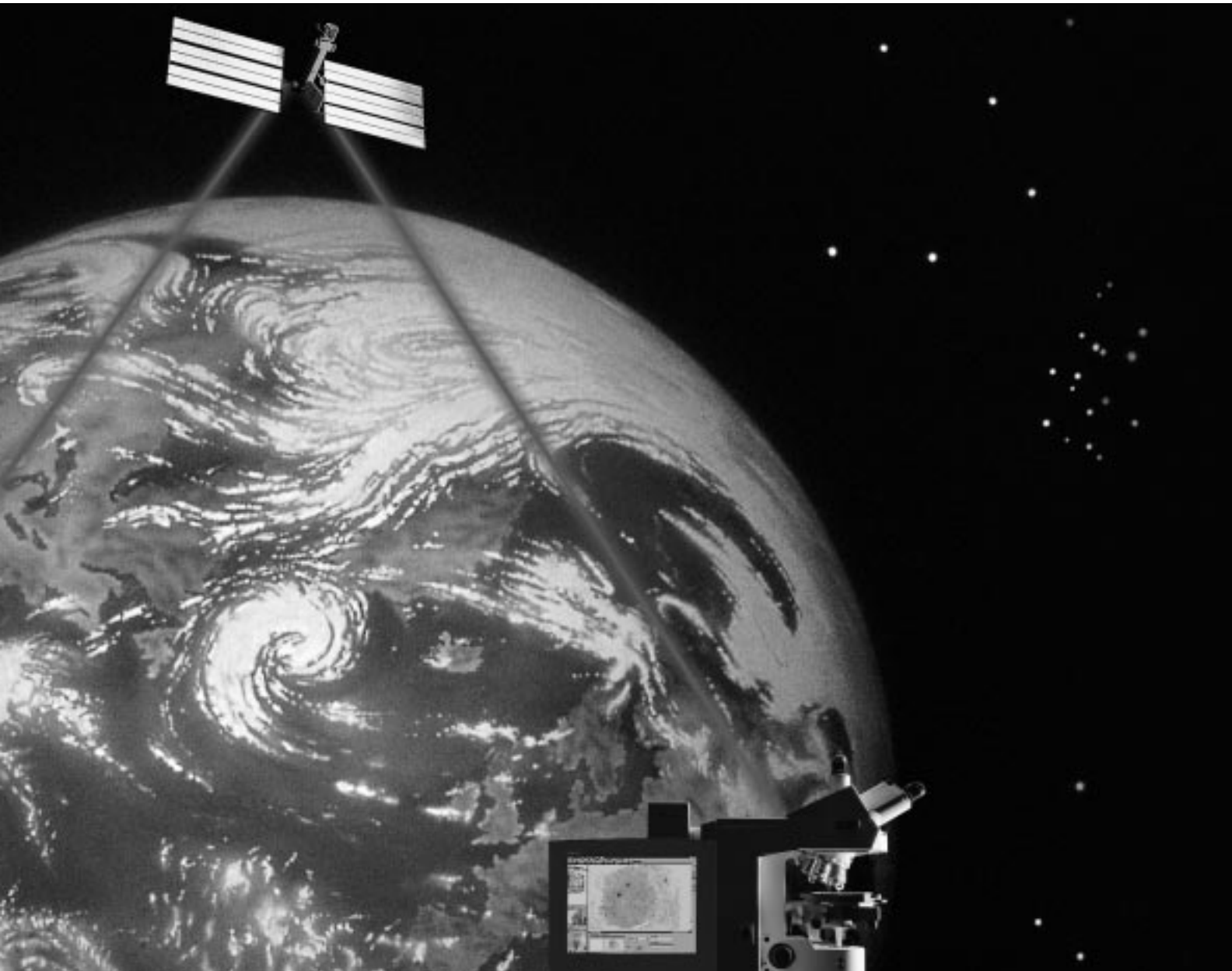


Axiopath The Telemicroscopy System



**Remote Vision
With A Mouse Click.**



Axiopath Expertise Available From Any Distance.

Imagine you want to discuss an interesting detail in a microscopic specimen with a colleague. It may be merely a matter of scientific interest, but it may just as well be a critical case where the health or life of a patient depends on a correct diagnosis. You need the opinion of another expert, and you need it immediately, but that expert may work in a different city or country, or on a different continent.

Now there is a technology that overcomes this problem with speed and ease – on-line tele-microscopy.

No limits, no borders:

Telemicroscopy by Carl Zeiss.

Axiopath with its dedicated LINK software developed by TriPath Imaging, Inc. is a modular telemicroscopy system, which overcomes distance, adapts precisely to your needs, and is amazingly easy to operate while providing a multitude of functions.

The system's capabilities are extensive: Interactive remote diagnosis, second opinion, tele-education, documentation and data exchange.

Fast, efficient, convenient.

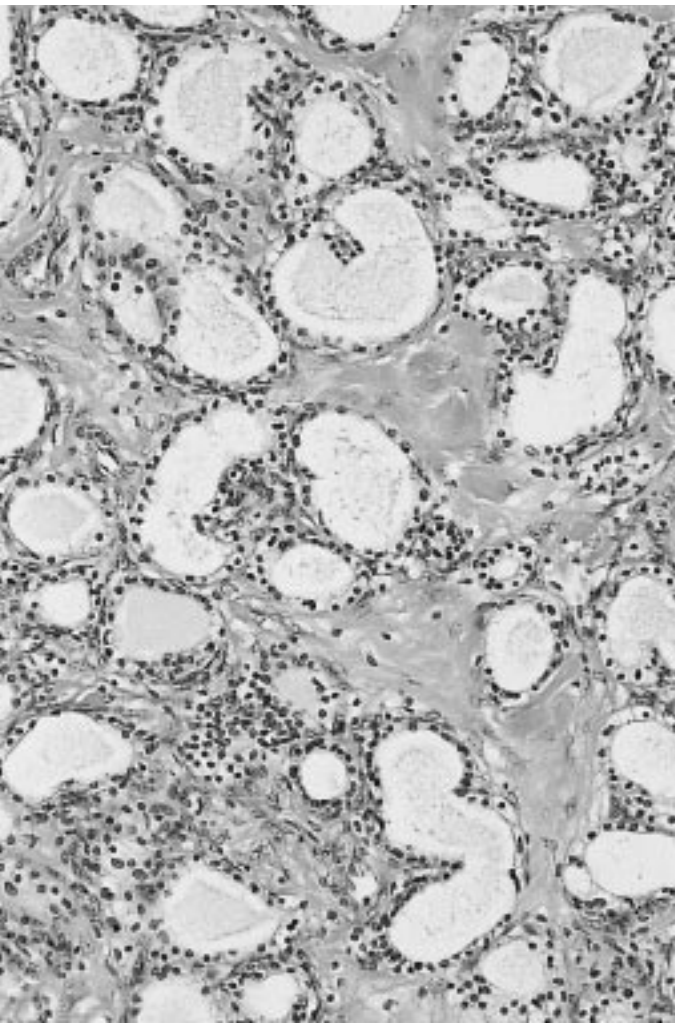
The **Axioplan 2 MOT** microscope is fully motorized, so you save time for the essential part of your work. Automatic setting of optimum Koehler illumination after every objective change guarantees brilliant, high-resolution images.

Specimen overview with remote control.

Added to its comfortable image processing, documentation and data exchange functions, the system provides full remote control of the Zeiss microscope. You can easily identify a feature of interest in an overview image and then locate it on the specimen.

Perfect cameras for perfect images.

All images are acquired in RGB quality with top-performing 3-CCD cameras. Optionally, a maximum-resolution digital camera is available for documentation.



Superbly Simple. Simply Superb.

The demonstrable excellence of the **Axiopath** telemicroscopy functions combines with simplicity of handling to enable speedy, dependable operation.

Select between two configurations: **Axiopath consult** and **Axiopath control**. Their modular design provides the flexibility needed to adapt to your requirements.

Documentation :

Continuous and convenient.

Here is the ideal, space-saving filing system for all decision-relevant information. **Axiopath** provides case-oriented management of data and images and lets you quickly retrieve earlier findings at any time. To be on the safe side, you can activate the logbook function, which will automatically compile a protocol of the session.

Image archiving with unique quality.

For the complete documentation of a case, the system allows you to archive both macroscopic and microscopic images. You will be impressed by the unique shadowless specimen illumination and the unsurpassed depth of field. You will welcome the comprehensive slide overview, seamlessly assembled from many partial images into a large, sharply defined monitor screen picture, in which you can move exactly to the detail of interest. And you will appreciate the realistic, RGB-quality color rendition.

Communication:

All roads are open.

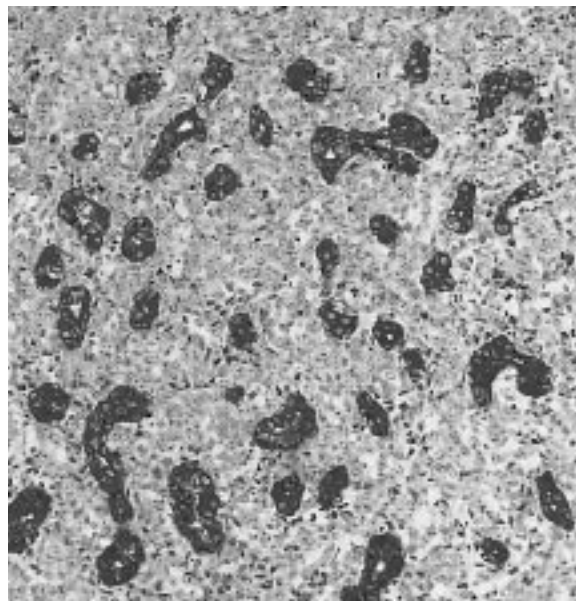
Images and data can be transmitted on-line or off-line through various export functions, such as a comfortably integrated e-mail function.

An integrated electronic telephone directory allows you to dial your partner directly for on-line consultation. Your discussion is supported by such features as identical text boxes, synchronized pictorial information with jointly operable mouse pointers, and integrated audio channel and videoconferencing.

Networked digital microscopy:

Your connection to the future.

Documenting, networking, data exchange... Telemicroscopy is becoming a tool just as essential to professional work today as other forms of telecommunication. Doors are opening into the next millennium, and Carl Zeiss will help you unlock them.



Remote Vision With A Mouse Click...

Imagine: Rather than sitting at your microscope you can relax in front of a monitor and have a convenient overview of your specimen. With a mouse click you can home in on an interesting

detail. Store the image with another mouse click, add graphs, measurement data and your comments – this is microscopy the comfortable way.

Every image is archived together with its specific information.

The icon bar provides fast access to all important information.

Communicate with your partner by videoconferencing.

The status bar keeps you informed about the current status of network communication.

The screenshot displays a software window titled "Mammex Co.™ AutoCore (32-bit) Image Stack (12788.00)". The interface includes a menu bar (Folder, Edit, View, Image, Annotation, Configuration, Connection, Help), a toolbar, and a main image area showing a grayscale micrograph of a tissue section. On the left, a "Folder Information" pane shows a tree view with "Live: Mammex Metasor / Sl" and a list of images such as "Mammex CA x 5", "Mammex CA x18 a", "Mammex CA x28", "Mammex CA x 1.25", "Mammex CA x18 b", "Mammex CA x18 c", "Mammex CA x18 d", "Mammex CA x18 e", "Slide Overviews", and "Slide 12788.00". Below this are two videoconferencing windows, each with a "View" button and a "Muting" button. At the bottom, a "Status Bar" contains "Image Information" and "Slide Information" tabs, a small thumbnail of the current image, and fields for "Slide Zoom" (set to 100%), "Stage X", "Stage Y", "Objective" (1.25x (0.025)", "Slide" (Slide 12788.00), "AECAP code", and "SHARC code". The bottom right corner shows "Connected with: kshen@slu99PLATE" and the date "2004/08 09:28".

...Thanks To Ergonomic System Design.

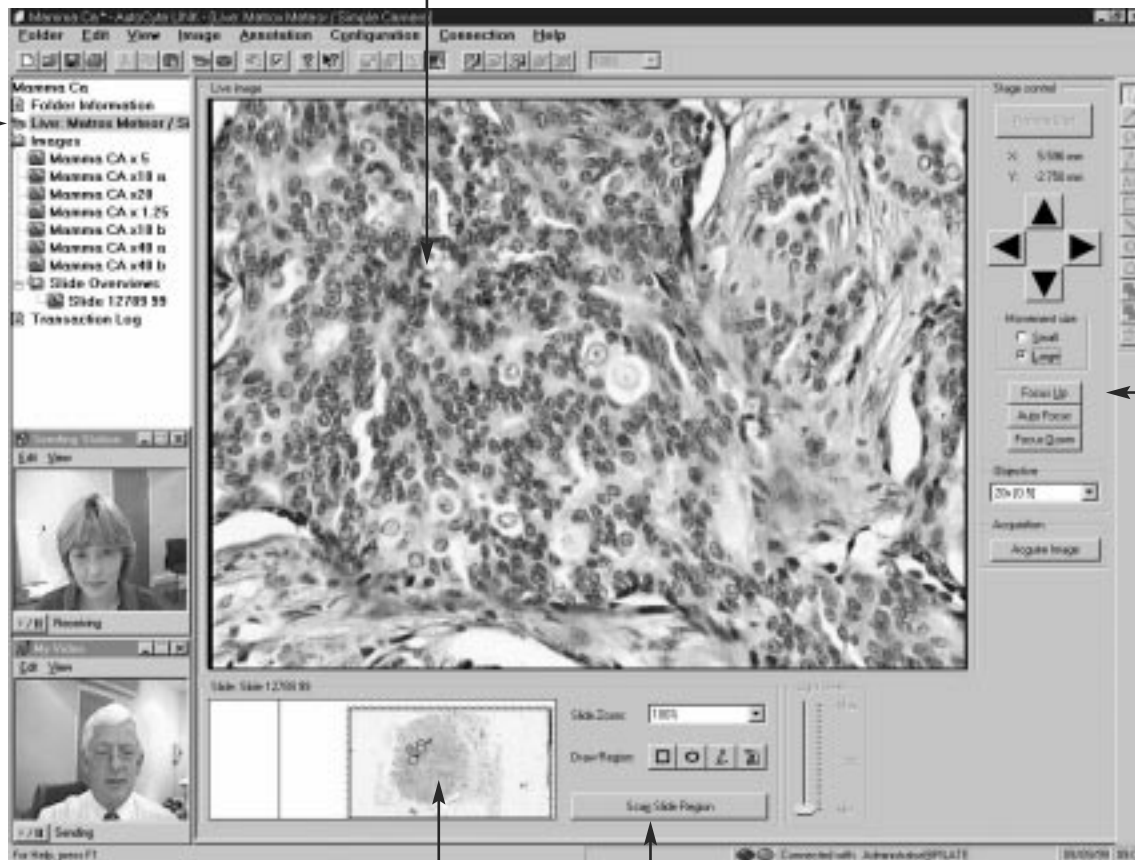
No operator interface could be more clearly laid out or easier to understand than that of the **Axiopath** system.

And what could be simpler than remote operation of the microscope by mouse clicks?

All information is stored in a well-organized electronic patient folder for fast retrieval at any time.

Select any information from a patient folder to see it in the central window – data, case report, archived images, slide overview, or this live image.

Use the remote control buttons on the right screen margin to operate your microscope by mouse clicks.



The digital specimen slide overview shows the current visual field and electronically marks important specimen details.

At a mouse click you can scan the specimen area or any part of it.

Active Or Passive - Advantages In Either Case.

The modular **Axiopath** system comes in two configurations.

Select the one that suits your requirements best – interactive work with the remote-controlled microscope, or diagnosis from preselected images.

The basic equipment:

Axiopath consult

This is a workhorse that efficiently assists you in your daily routine work. Case-related database, image gallery, and automatic report compilation substantially facilitate your documentation chores. Via modem, ISDN, Internet or other network connections you can transmit all stored data to the colleague you want to consult. Images and data can be exported to other databases and transmitted by e-mail or in HTML format.

Fully configured:

Axiopath control

This workstation comes with a fully servo-controlled microscope. It presents a digital slide overview image to both partners, for fast orientation and navigation. The remote partner (the pathologist) can control the microscope by active navigation in the overview image.

| Telemicroscopy System Overview | | |
|--|---|--|
| | Axiopath consult | Axiopath control |
| Case-related database with image archiving | yes | yes |
| Image compression (adjustable) | yes | yes |
| Image annotations | yes | yes |
| Discussion with mouse pointers | yes | yes |
| Measurement functions | yes | yes |
| Automatic logbook protocol | yes | yes |
| Diagnostic report compilation | yes | yes |
| Export/Import of data and images | yes | yes |
| HTML translation | yes | yes |
| ODBC database interface | yes | yes |
| Transmission via e-mail | yes | yes |
| Electronic telephone directory | yes | yes |
| ISDN port | yes | yes |
| Ethernet port | yes | yes |
| Audio- and videoconferencing | optional | optional |
| Application sharing | optional | yes |
| Micro- and macroscopic live images in RGB quality | optional | yes |
| Workstation synchronization | optional | yes |
| Digital slide overview | – | yes |
| Navigation in overview image | – | yes |
| „Mark and Find“ relocation of marked specimen details | – | yes |
| Quantification of nucleus-specific markers (DNA, proliferation, receptors) | optional | optional |
| Remote maintenance via hotline | yes | yes |
| Applications | Documentation Telediscussion Teleconsultation Teleteaching | Documentation Telediscussion Teleconsultation Teleteaching Fast diagnosis of tissue sections |

Axiopath control - Efficient And Cost-Effective.



On-line telemicroscopy from Zeiss allows you to increase the efficiency of your work and to counter the cost explosion in health care. Risky and expensive courier trips can be avoided, waiting times of whole teams be reduced. Workflow in the hospital is optimized. Preparation and diagnosis are fully controlled by the pathologist.

The specimen:

Document your tissue specimen under shadowless illumination and discuss it via videoconferencing. After preparation, have the system scan the slide and generate a digital overview image.



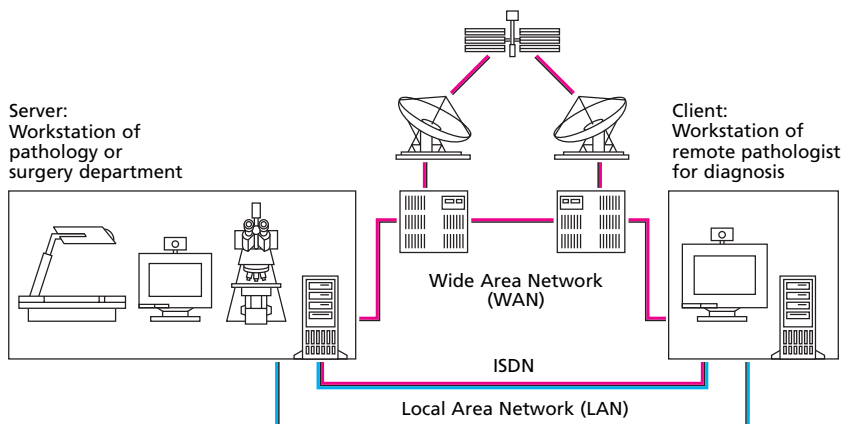
The diagnosis:

The pathologist consulted can exercise remote control of the microscope. The high-resolution overview image allows fast orientation and certain navigation. Remote control is facilitated by autofocus and light manager. The findings can be discussed by videoconferencing and added to the patient file.

Axiopath Technology With Vision.

| | Axiopath consult | Axiopath control |
|-------------------|---|------------------|
| Microscope stand | Axioskop 2 *) | Axioplan 2 MOT |
| Autofocusing | depending on microscope stand | yes |
| Specimen stage | manual | motorized |
| Objectives | Plan Neofluar 1.25 x, 5 x, 10 x, 20 x, 40 x | |
| Objective change | depending on microscope stand | motorized |
| Video camera | 1/2" 3-CCD chip with RGB signal | |
| Digital camera | optional ProgRes 3012 (3072 x 2320) | |
| Macroviewer | optional 1/2" 1-CCD chip with RGB signal, shadowless illumination | |
| Videoconferencing | optional | |
| Image analysis PC | Min. PII 400 inquire for current configuration | |
| Frame grabber | Matrox Meteor II | |
| Networking ports | Ethernet / ISDN | |
| Network protocol | TCP / IP | |
| ISDN adaptation | optional up to 4 ISDN lines | |
| Remote via ISDN | yes | |

*) Inquire about other microscopes.



For further details, please contact:

Carl Zeiss Microscopy

D-07740 Jena

Phone: ++49-36 41/64-16 16

Telefax: ++49-36 41/64-31 44

E-mail: micro@zeiss.de

Internet: www.zeiss.de/micro

Subject to change.

